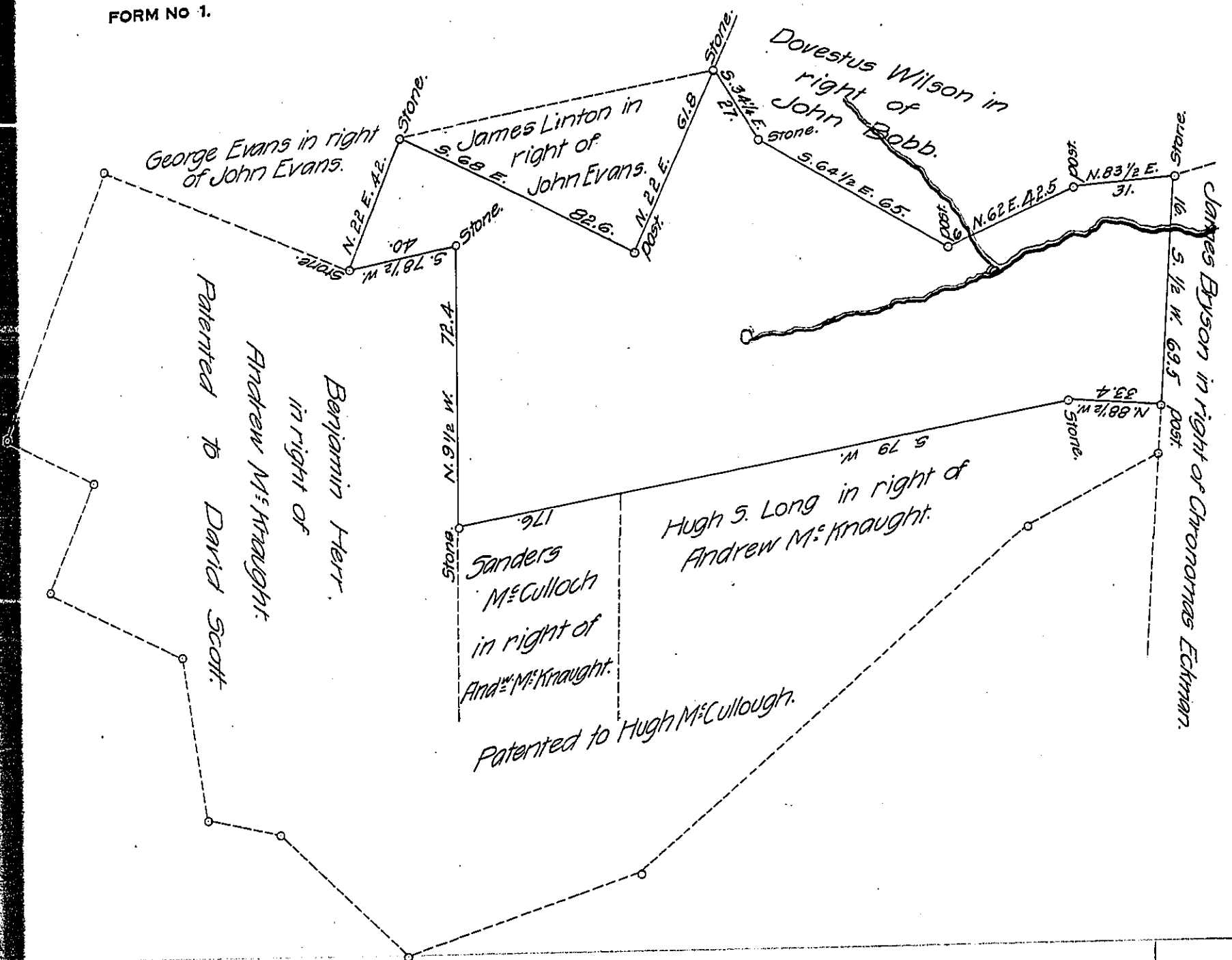


FORM NO. 1.



Draught of a tract of land in Drumore township, in the county of Lancaster, containing 99 acres 39 perches and the allowance of six per cent for roads, &c. Surveyed for James Linton the 19th day of April, A.D. 1873; - being part of a larger tract of 328 1/2 Acres & allowance, originally surveyed in pursuance of an Order on Application No. 1635, dated the 17th day of June, 1766, granted to Andrew M^cKraught.

Surveyed by John C. Lewis
for Jacob Hildebrand,
County Surveyor.

To Rob. B. Beath,
Surveyor Gen^l.

IN TESTIMONY that the above is a copy of the original remaining on file in the Department of Internal Affairs of Pennsylvania, made conformably to an Act of Assembly approved the 16th day of February, 1833, I have hereunto set my Hand and caused the Seal of said Department to be affixed at Harrisburg, this First day of June, 1908.

Henry Howard
Secretary of Internal Affairs.